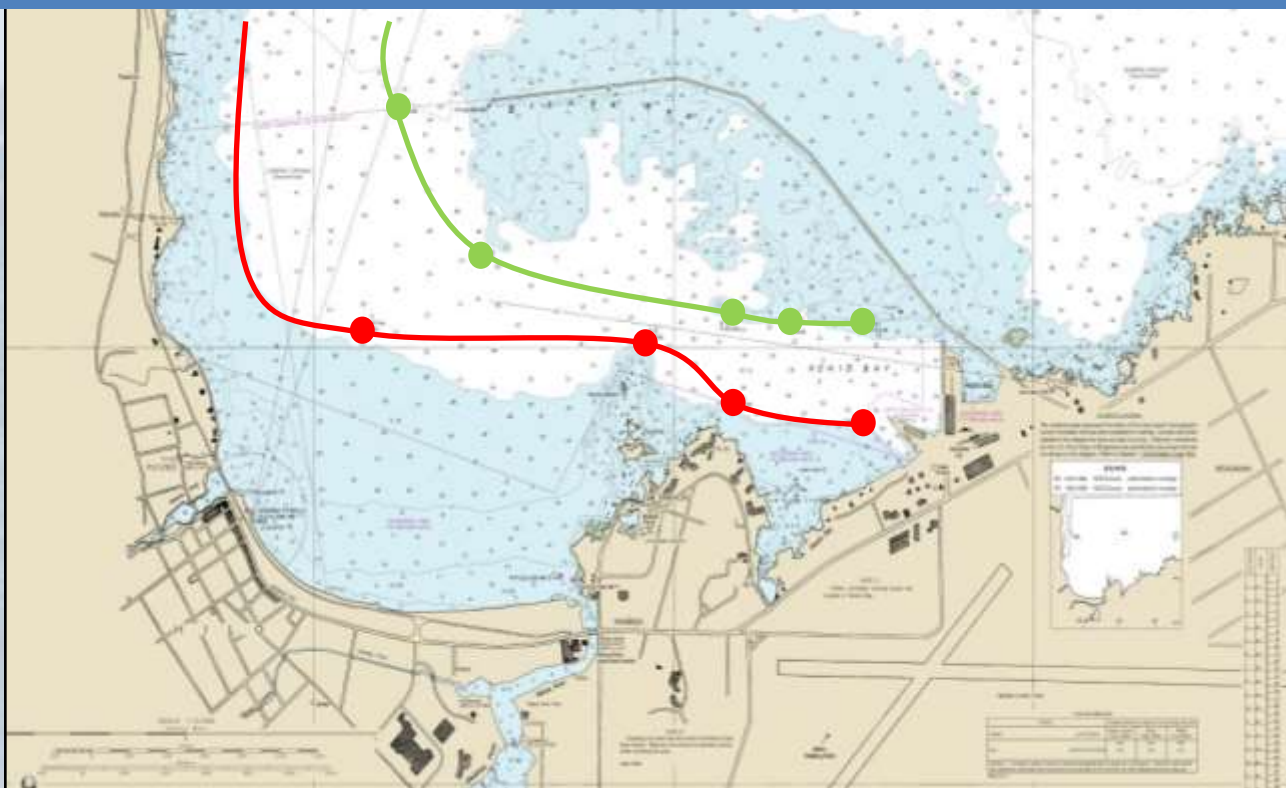


Crossing Channels:

- Commercial vessels are difficult to maneuver and may only operate within a marked channel. Provide vessels with ample space to ensure the environment and your own personal safety!
- If you must cross a channel, cross quickly and directly across.
- When traveling with 1 or more crafts, cross as a group.
- Use the same precautions as crossing a street: look both ways, cross quickly only when you have ample time while considering ocean conditions-current, wind, tide and surf.



Due to the depth of their draft, commercial vessels such as tugs, barges, cruise liners and cargo ships are only able to operate within the red and green navigational buoys shown in the chart below. It is important to give these vessels the right of way and plenty of room to not affect their navigation. If you can't see them, they can't see you!



Hilo Harbor, Hawaii



**Informational
brochure for
recreational crafts
such as OC-1, OC-6,
SUPs, Kayaks, etc. on
how to share our
waterways safely with
commercial vessels**

hothawaii@hothawaii.org

Signals used by Canoes, SUP, Kayakers



Paddle Held Horizontally-
“I see you, and will hold position.”



Paddle Held Vertically-
“I see you and will stay out of your way.”



**Paddle held vertically, frantic waving
from side to side OR
Arms vertically moving up and down-**
“I am disabled and cannot move.”



Whistle Signals Used By Commercial Vessels

Whistle signals are used by mariners to communicate without using a marine radio. It is important to familiarize yourself with the following signals if you operate in the vicinity of commercial vessels.

**There are several other whistle signals used by mariners not listed.*

Short Blast- 1-2 seconds long
Prolonged Blast-4-6 seconds long



5 Short Blasts of their Horn-
The Captain is unaware of your intentions. Also means Danger, there is a risk of collision.



1 Prolonged Blast of Horn-
Vessel is Departing the Dock



3 Short Blasts-
Vessel Is Backing out,
Reversing

RULES OF THE ROAD!

Here are a few Rules of the Road that are important to staying safe in the ocean!

Rule 2: Responsibility

This states that all vessels—including recreational crafts—have a responsibility over their own vessel.

Rules 7 and 8: Risk of Collision and Action to Avoid Collision

All mariners and paddlers are responsible for ensuring safe navigation in all waters and must take appropriate action to avoid a collision.

Rule 9: Narrow channels

This states that small craft "shall not impede the passage of a vessel which can safely navigate only within a narrow channel or fairway."



Dive Buoys and Flags

Give divers plenty of space, proceed cautiously and be vigilant of surfacing divers. Vessels shall be prohibited from approaching within 100 feet of a displayed diver's flag or within 50 feet of a displayed diver's flag on navigable streams, except within marked navigation channels."

For more information on the Rules of the Road, Navigational Aids and Whistle Signals visit:
<http://www.navcen.uscg.gov>